



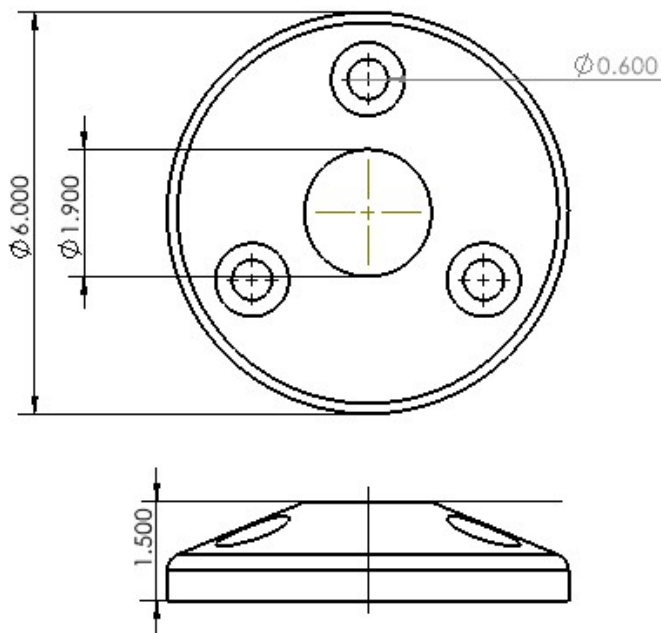
TECHNICAL DATA SHEET

HARD SURFACE BASE MOUNT - p/n MBK-HS-A

DESCRIPTION

6" OD, Pipe Base Mount with 1.5" NPT female threaded orifice and 3 hole pattern for hard surface (concrete or asphalt) mounting support of 1.5" threaded pipe, up to 12' in height.

Components and installation hardware are kitted and shipped together as a complete system for ease of assembly and installation on site.



FEATURES

6061 T6 Aluminum

Wedge bolt kit

Suitable for Schedule 40 1.5 inch threaded pipe

Simple Installation

Temporary or Permanent Installation

APPLICATIONS

Pole or Pipe base mounting

SF INDUSTRIES

1 979 421 9024

sales@sfindustriesusa.com

www.sfindustriesusa.com

1910 EAST TOM GREEN ST
STE 1A
BRENHAM, TEXAS 77833