

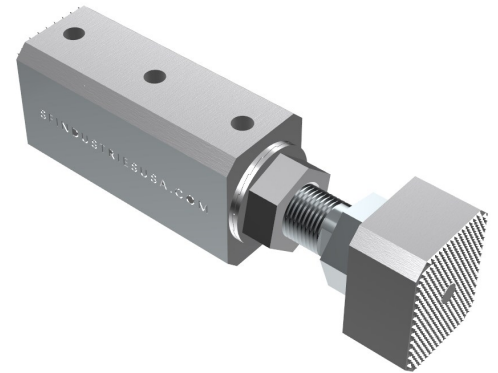


TECHNICAL DATA SHEET

BEAM ANKR - I-BEAM MOUNTING BRACKET - p/n SFIBAM-81011

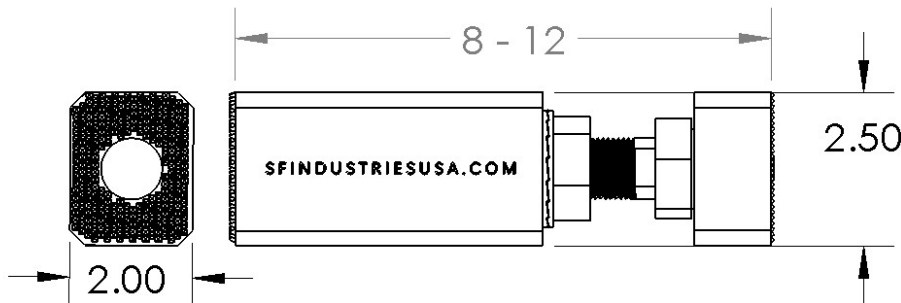
DESCRIPTION

The BEAM ANKR is a between flange tension mounted bracket for a wide range of loads up to 162 lbs on standard beams. Adjustable to fit between beam flanges from 8 to 12". The mounting surface is pre-drilled and tapped for custom mounting and standard strut installation.



P/N: SFIBA-81011

TECHNICAL DATA



162 lb Load Rating

Weight 3 lbs

700 lb Pull Out Force

Clamp Bolt Torque 105 ft lbs

LOAD DATA

Table of max load by distance from BEAM ANKR mounting surface to load center of gravity.

Distance (in)	2	4	6	8	10	12	14	16	18	20
Load (lbs)	162	100	72	57	47	40	34	30	27	25

FEATURES

Anodized 6061 Aluminum

Knurled Gripping Surfaces

High Strength Clamping Bolt

Fully Adjustable from 8-12"

No Drilling, Welding or Bolting

Simple Installation

Temporary or Permanent Applications

SF INDUSTRIES

1 979 421 9024

sales@sfindustriesusa.com

www.sfindustriesusa.com

1910 EAST TOM GREEN ST
STE 1A

BRENNHAM TEXAS 77833