



# TECHNICAL DATA SHEET

ANGLE RAIL p/n MHK-RA-A (G or S)

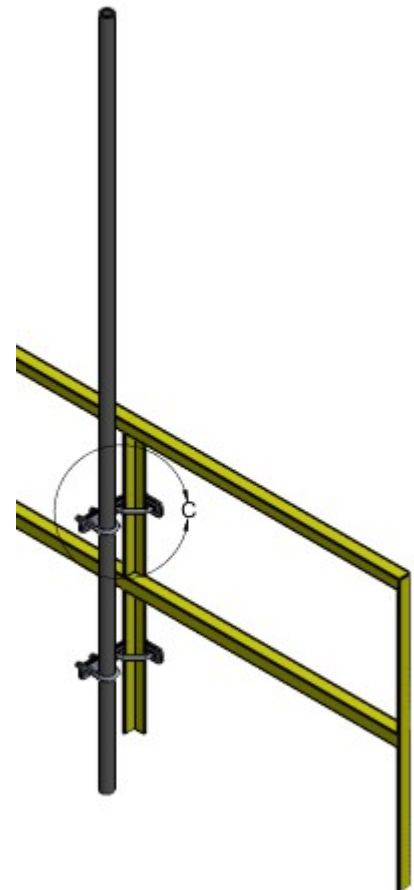
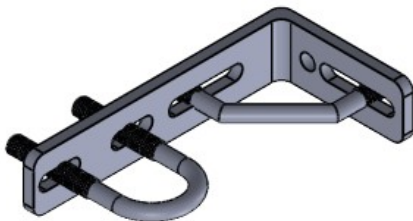
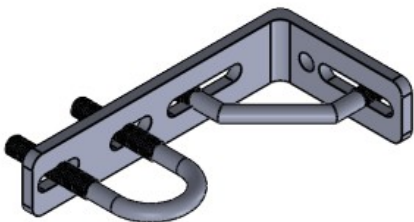
MATERIALS: 3/8" 304 OR 316 STAINLESS STEEL, HDG CARBON STEEL, ALUMINIUM

## DESCRIPTION

Bolt on "L" brackets for mounting stanchion poles and apparatus to angle handrail or walkway.

Fits up to 2" nominal pipe and tube and 1.5 - 3.5" angle rail

The system components and installation hardware are kitted and shipped together as a complete system for ease of assembly and installation on site.



**SF INDUSTRIES**

1 979 421 9024

[sales@sfindustriesusa.com](mailto:sales@sfindustriesusa.com)

[www.sfindustriesusa.com](http://www.sfindustriesusa.com)

1910 EAST TOM GREEN ST  
STE 1A  
BRENNHAM, TEXAS 77833